



Sea Surface to Snowy Summits: Teleconnections as Drivers of Snow Cover in Himalayan Basins

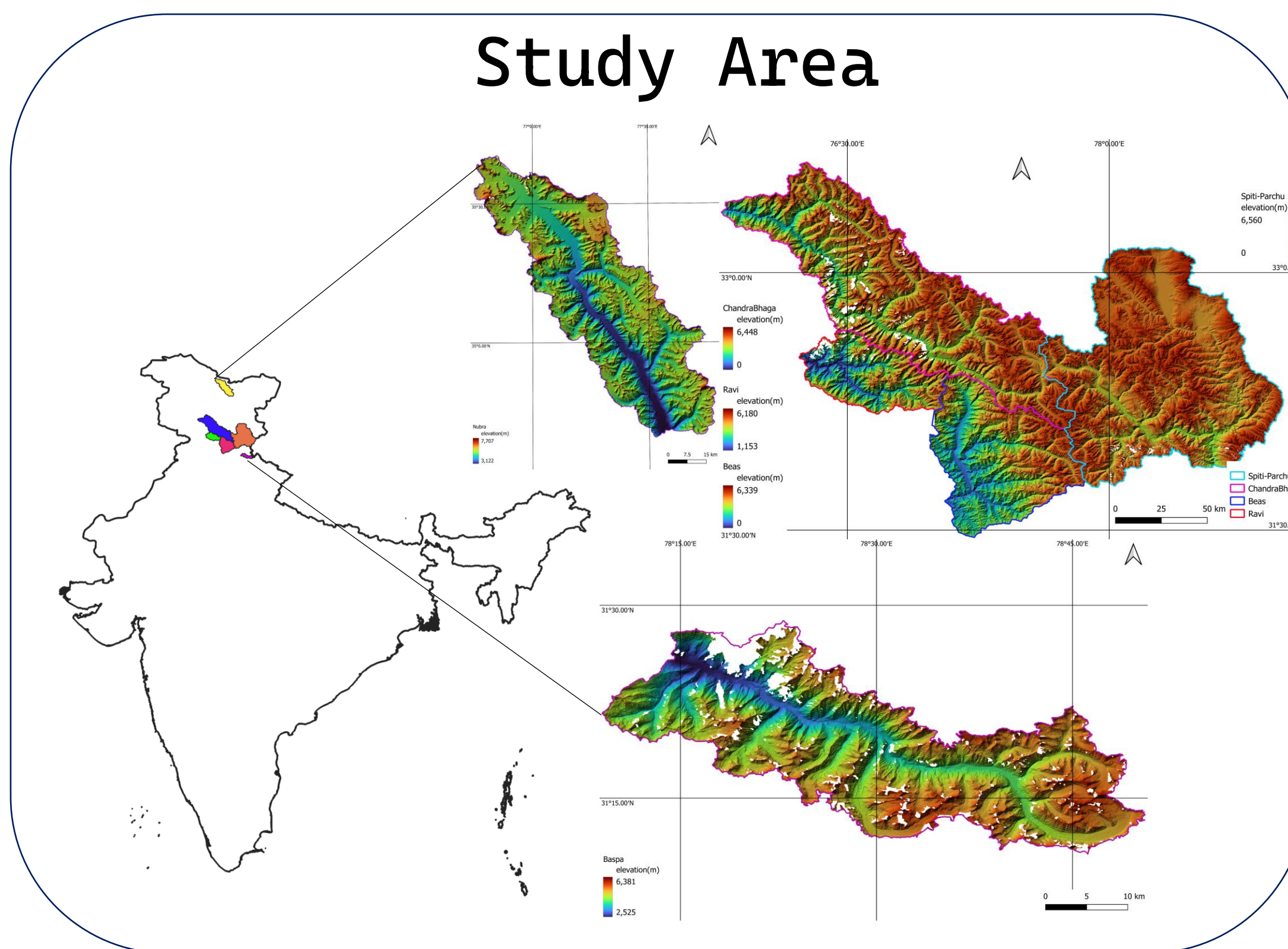
Shairik Sengupta, Rajarshi Das Bhowmik

Interdisciplinary Centre for Water Research, Indian Institute of Science, Bangalore, India, 56001

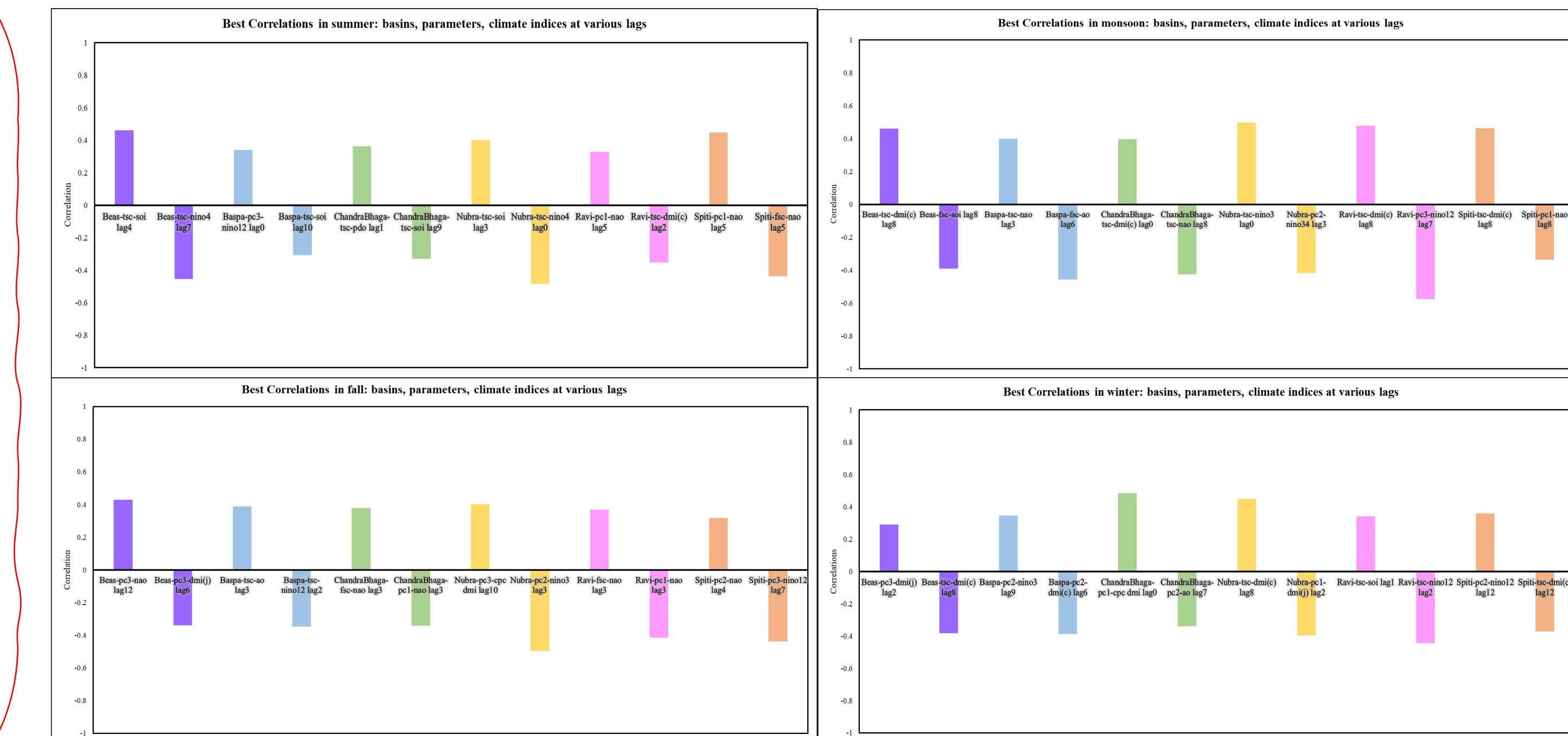
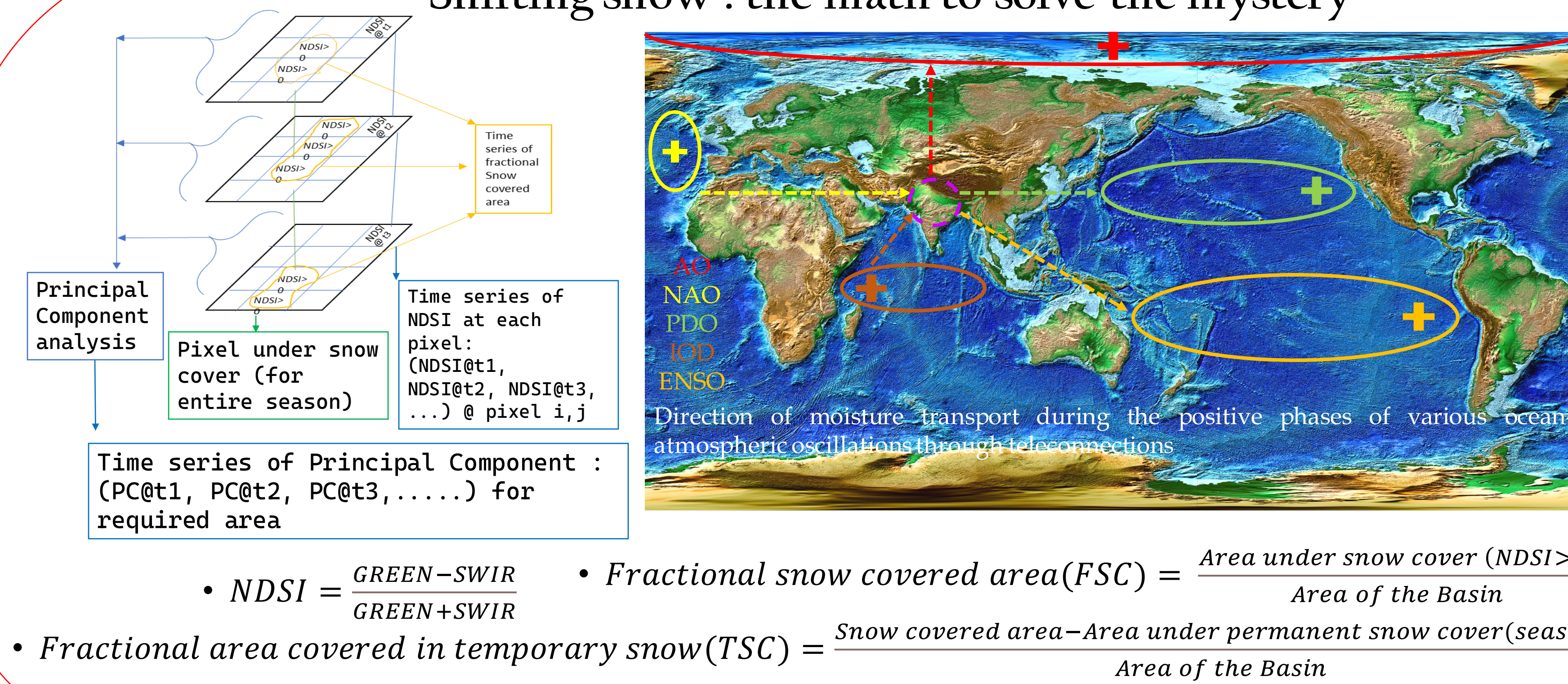
AGU23

C53B-1043

Study Area



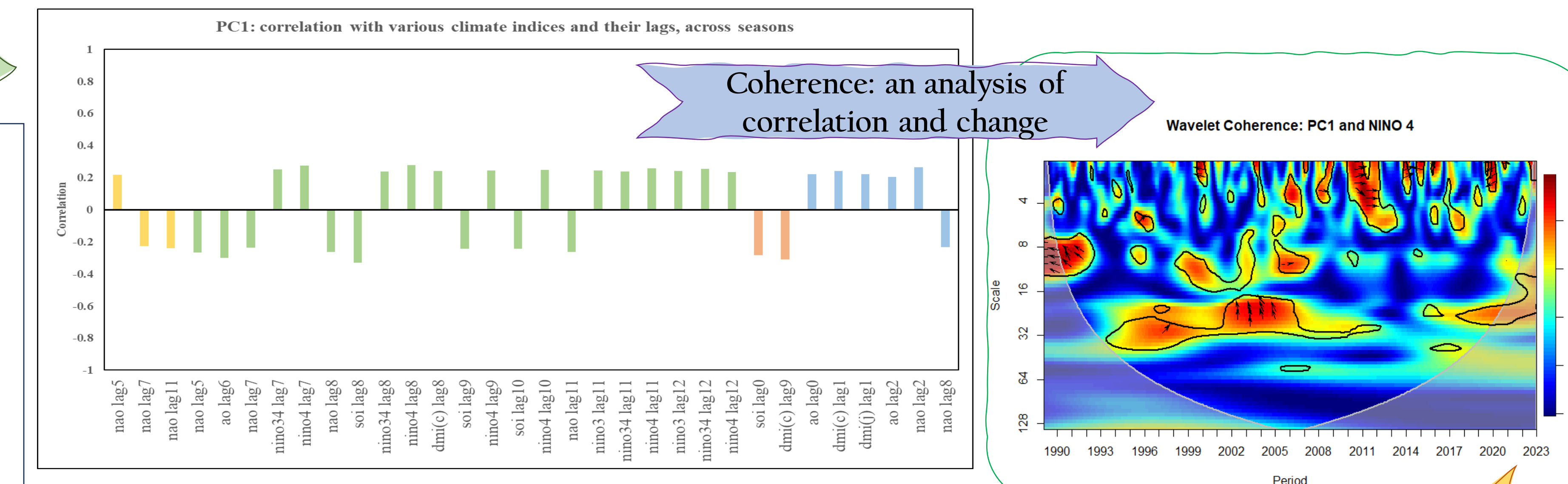
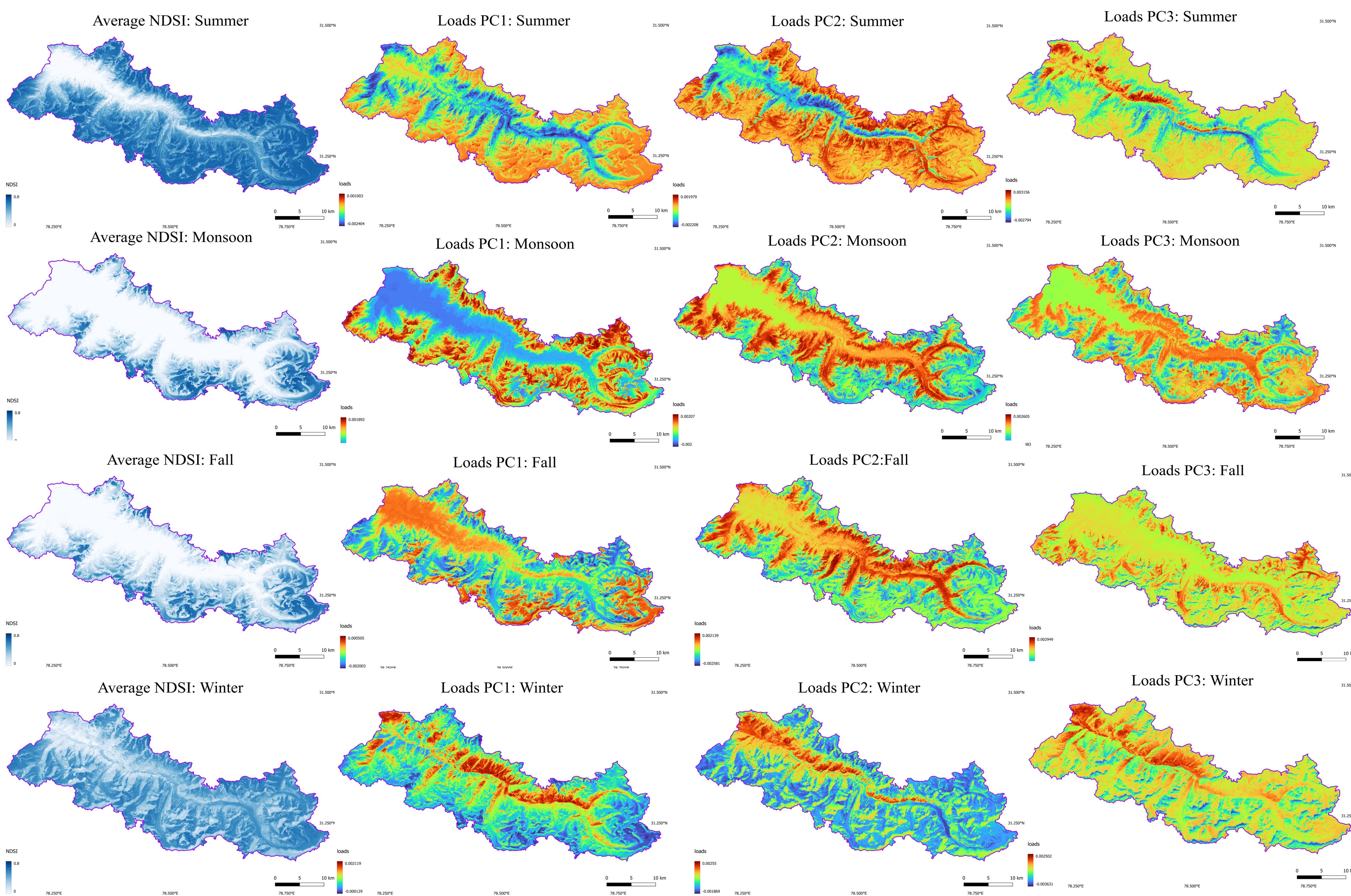
Shifting snow : the math to solve the mystery



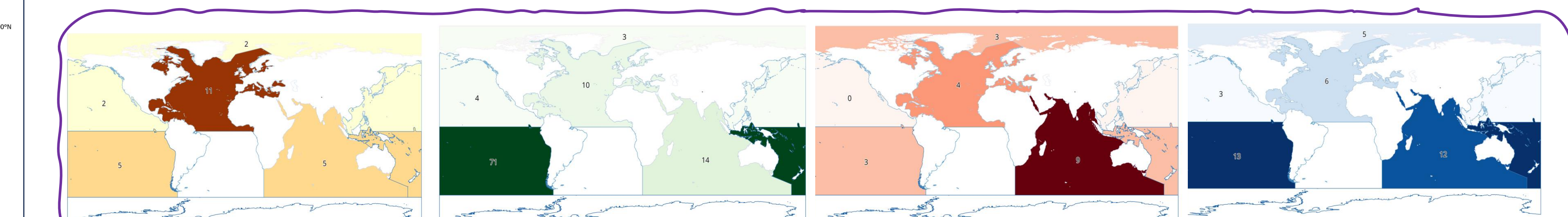
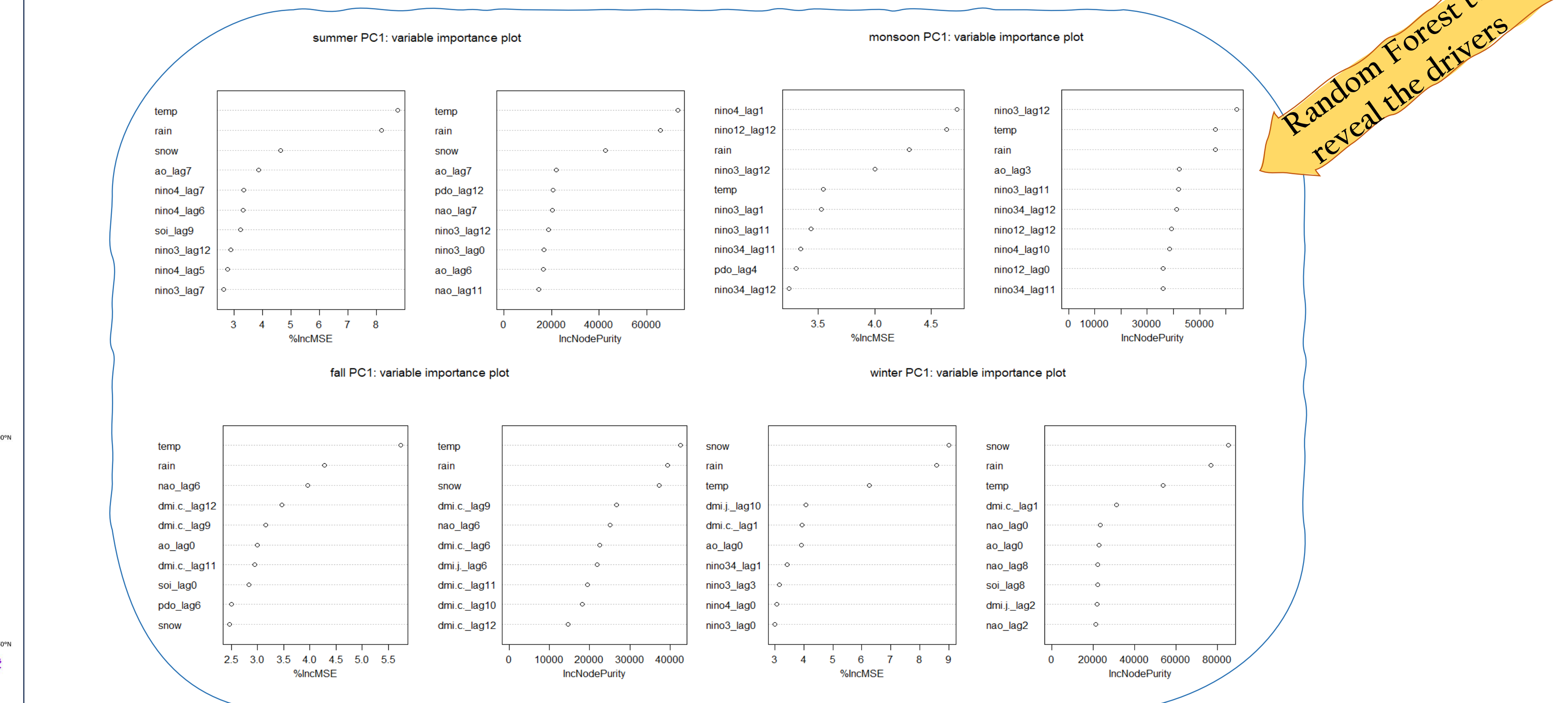
A small look at the big perspective: across basins and measures

Baspa basin: the story of snow through space and time

Seeing through the seasons:
Seasonal correlation analysis



Random Forest to
reveal the drivers



Seasons and according regions driving snow cover

Climb every mountain, swim every ocean....

Email: shairiks@iisc.ac.in

